

0 385 770 1,540 Meters

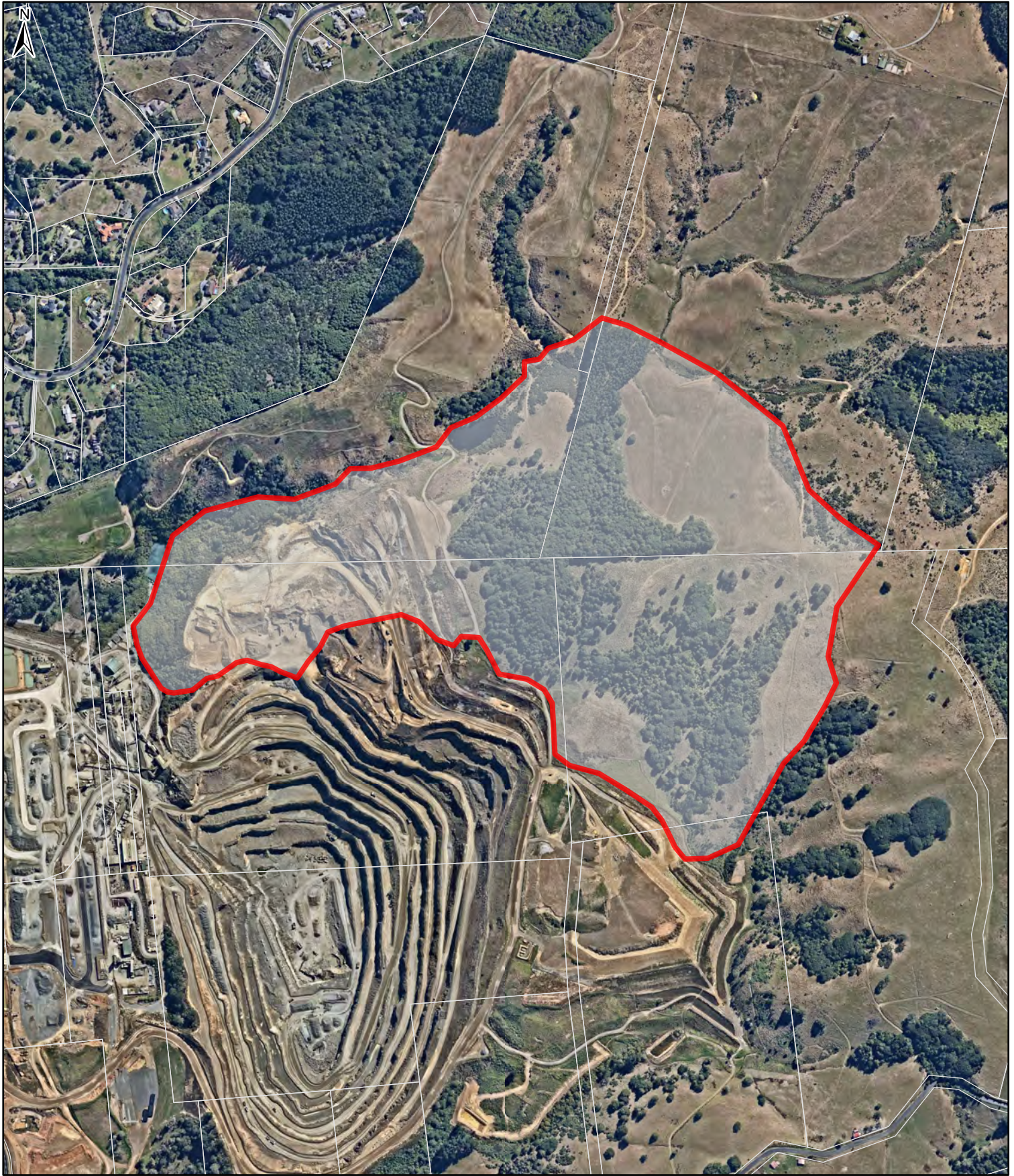
Tranche 2a - Sites of Significance to Mana Whenua

Site Name - Karearea Pa
Site ID - 0275



Whilst due care has been taken, Auckland Council gives no warranty as to the accuracy and completeness of any information on this map/plan and accepts no liability for any error, omission or use of the information.

Tranche 2 - nominated site extent




0 385 770 1,540 Meters

Tranche 2 - Sites of Significance to Mana Whenua

Site Name - Kaarearea Paa
Site ID - 275

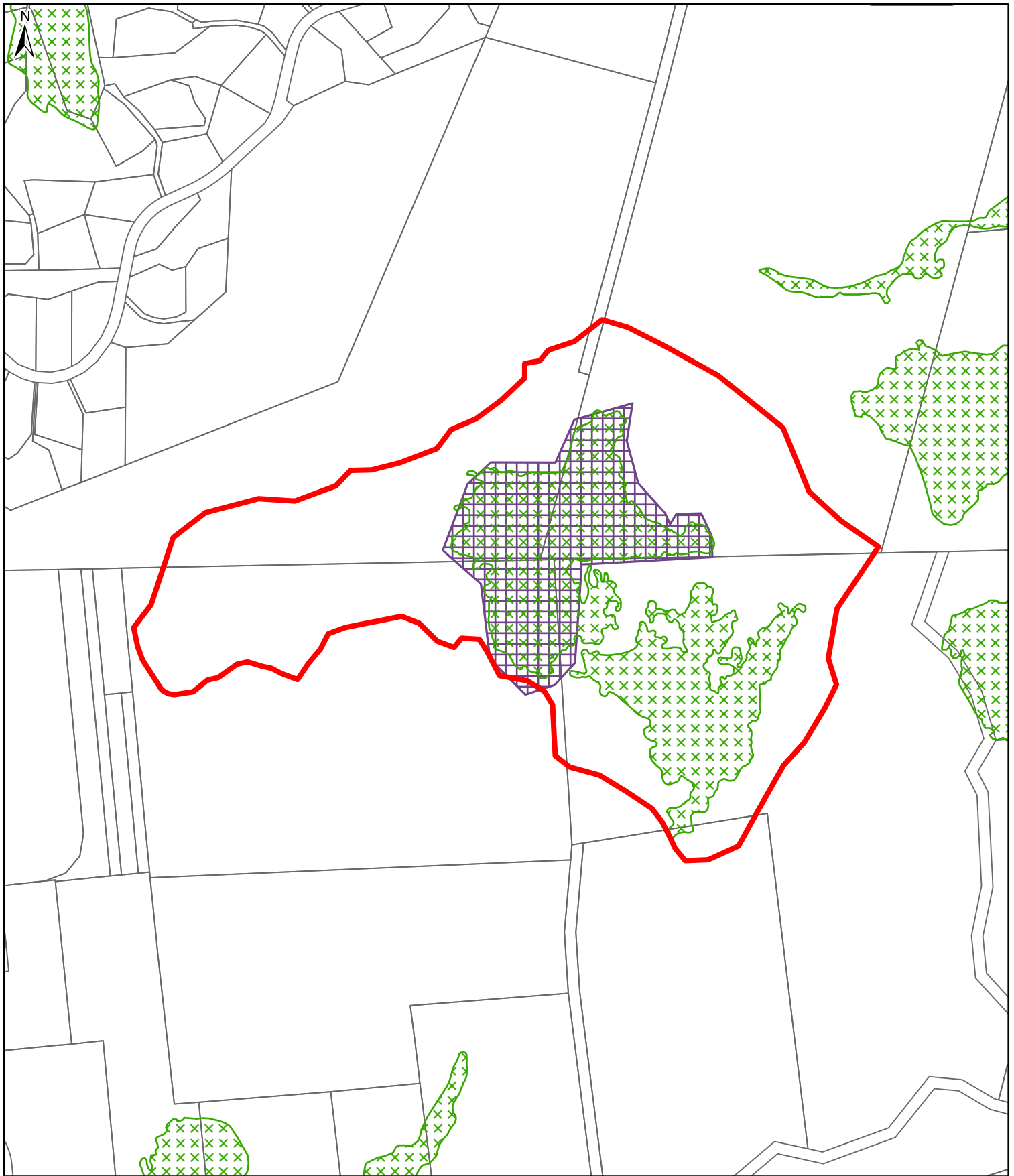


Whilst due care has been taken, Auckland Council gives no warranty as to the accuracy and completeness of any information on this map/plan and accepts no liability for any error, omission or use of the information.

 Tranche 2 - nominated sites extent

Land Owners

 Private land




0 385 770 1,540 Meters

Tranche 2a - Sites of Significance to Mana Whenua

Site Name - Kaarearea Paa
Site ID - 0275



Whilst due care has been taken, Auckland Council gives no warranty as to the accuracy and completeness of any information on this map/plan and accepts no liability for any error, omission or use of the information.

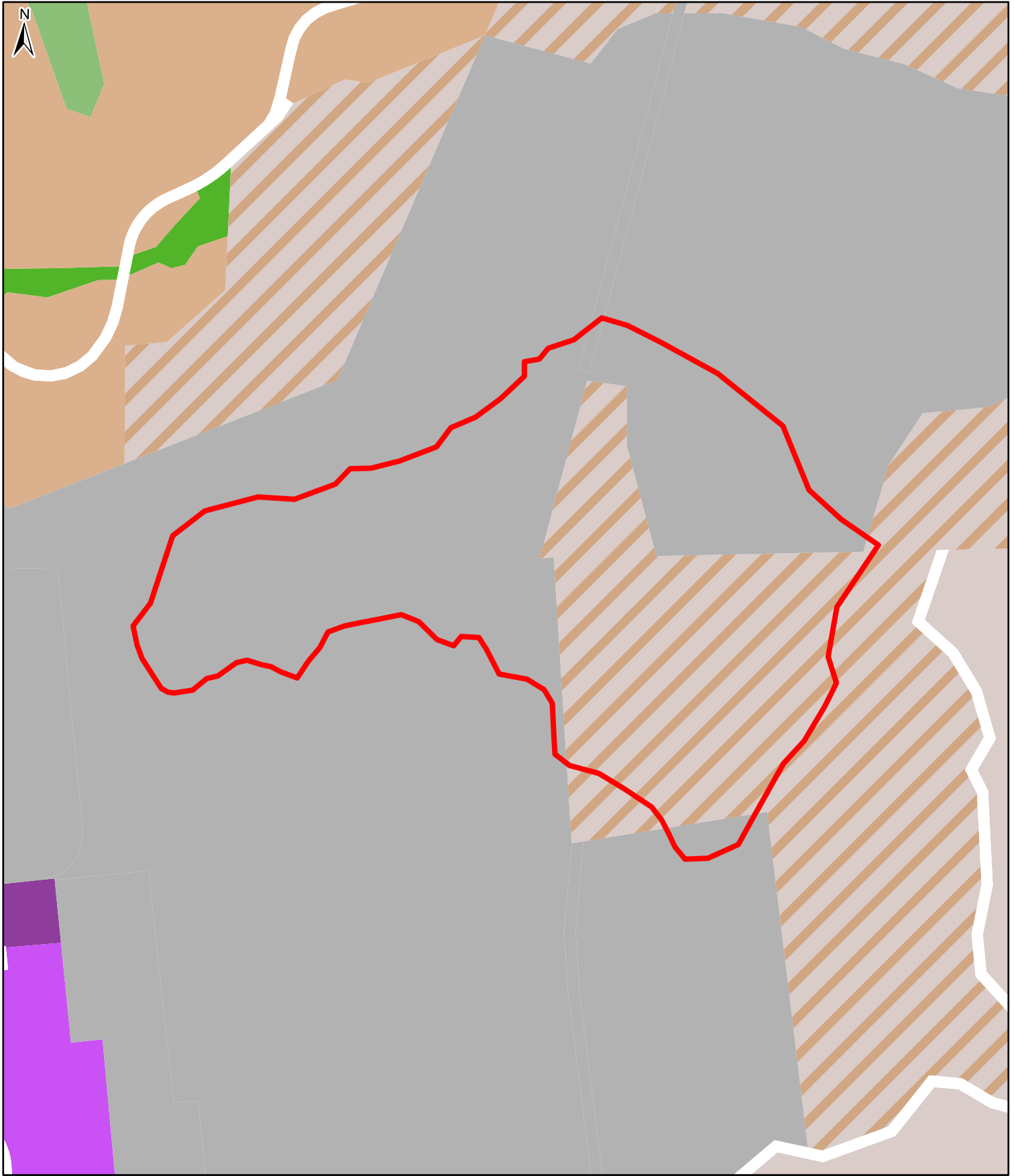
 Tranche 2 - nominated site extent

Significant Ecological Areas Overlay

 Terrestrial

 Outstanding Natural Landscapes Overlay

 Historic Heritage Overlay Extent of Place [rcp/dp]




0 385 770 1,540 Meters

Tranche 2a - Sites of Significance to Mana Whenua

Site Name - Kaarearea Paa
Site ID - 0275



Whilst due care has been taken, Auckland Council gives no warranty as to the accuracy and completeness of any information on this map/plan and accepts no liability for any error, omission or use of the information.

 Tranche 2 - nominated site extent

ZONE

 Rural - Mixed Rural Zone

 Special Purpose Zone